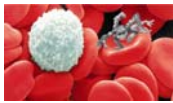


# the Body from within

## catch the fever!

**Cell:** the smallest unit of an organism that can function independently. Nothing less than a cell can truly be said to be alive. Some microscopic organisms, such as bacteria and protozoa, are single cells whereas animals and plants are composed of many millions of cells built into tissues and organs. Although viruses and cell-free extracts are able to perform many individual functions of a living cell, they lack the capacity shown by cells of independent survival, growth, and replication, and are therefore not considered to be living. Before we can understand how a human body functions, develops and ages, and what goes wrong with it in disease,



we need to understand the cells of which it is made.

So as we like to say: "*Omnis cellula e cellula*", that is, "all cells come from cells".

We and the Body cordially invite you and your friends to join us at IMWe at Easter 2006!

There you will live in the Body, work and have fun together with 60 – 80 other guides and scouts from all over Europe aged 17 and upwards. The programme of arts and crafts, theatre and music aims to provide you with space to discover your own creativity and express yourself while trying new activities and discovering new skills. The IMWe aims to create an atmosphere where cultural exchange with young people from all over Europe is effortless by working together creatively and exchanging ideas for scouting and experimenting with them.

### IMWe 2006 Programme:

- ▶ For the whole week you choose a morning workshop where you work intensively in a small group on a project from arts, crafts, music or theatre.
- ▶ In the afternoons you have time to try many different things from arts to games and sports, brought from all over Europe and maybe by you.
- ▶ In the evenings there are events for the whole group, like performances, European evening, Creative evening, concert, a night game, and the big final banquet party.
- ▶ Everything is set within a theme that sets the atmosphere, decoration and costumes for the week and is used throughout the programme.
- ▶ There will be the opportunity to explore the local surroundings of Rieneck on the outing day. Of course in between the programme there will be time for relaxing, talking and singing with new friends from all over Europe.
- ▶ The international team will help you to establish contacts for further international exchanges.

### We look forward to seeing you at IMWe2006!

Yours in Scouting,  
The international IMWe-Team



### IMWe 2006 Registration:

If you are interested in IMWe2006, please fill in this form as a preliminary, unbinding registration and you will get further information in due course.

Just send it to:

- ▶ Stefanie Ganser  
Frauentorgasse 45-51/1/7  
A-3430 Tulln  
Austria



Alternatively you can visit the website [www.imwe.net](http://www.imwe.net) to register or just subscribe the newsletter to get the newest information regularly.

✂

- ▶ **Surname:** \_\_\_\_\_
- ▶ **First name:** \_\_\_\_\_
- ▶ **Address:** \_\_\_\_\_  
\_\_\_\_\_
- ▶ **Country:** \_\_\_\_\_
- ▶ **Telephone:** \_\_\_\_\_
- ▶ **Email:** \_\_\_\_\_
- ▶ **Date of Birth:** \_\_\_\_\_
- ▶ **Association:** \_\_\_\_\_
- ▶ **Position:** \_\_\_\_\_

age of the scouts if you are a leader: \_\_\_\_\_

- ▶ **Space for further questions and information:**

## IMWe 2006 In short:

- ▶ **Date:** Mon 10.04. – Mon 17.04.2006
- ▶ **Theme:** the Body from within; catch the fever!
- ▶ **Programme:** creative workshops, interest groups, games, dream time, music time, European evening and more.
- ▶ **Place:** Scout and Guide Castle Rieneck, Germany.
- ▶ **Participants:** 60 – 80 Rangers, Rovers and Leaders aged 17+ years, from various European countries.

### ▶ Cost:

110 €

210 €

150 €

(Slovenia, Portugal, Greece and Malta)



- ▶ **Organizer:** Verband Christlicher Pfadfinderinnen und Pfadfinder (VCP), Wichernweg 3, D-34121 Kassel, Member of WAGGGS and WOSM
- ▶ **Information:** [www.imwe.net](http://www.imwe.net), [imwe@gmx.net](mailto:imwe@gmx.net)  
Tel +49 (0)551 78 96 632 (Wendy Skinner)
- ▶ **Registration:** Please use the online application form at [www.imwe.net](http://www.imwe.net) or fill in the form overleaf.



International Creative Workshop for Scouts  
Easter 2006  
[www.imwe.net](http://www.imwe.net)

## IMWe 2006 One week of your life.

Scouting international. Fun. Experience. Friendship.

Scout and Guide Castle Rieneck



IMWe 2005 group photo (the Cucumber King)



Verband Christlicher Pfadfinderinnen und Pfadfinder  
Fachgruppe IMWe, © 2004

